

Direct Debit Finally!

After receiving many requests from the owners of Unley amazed that we did not offer a direct debit option to pay Council Rates....finally.....

After a system upgrade we are now able to offer this option. Council rates can now be paid using direct debit either annually, quarterly or in equal monthly instalments.

Recent Unley Life columns advertised this new payment option and the 3rd quarter rate notice will list the new payment option.

An application form is available for completion on Council's website unley.sa.gov.au/payment-options and on request via Customer Service.

Please contact the Rate area if you have any questions.

Kym Caulfield Snr Rates Coordinator t 08 8372 5133

Unley Sesquicentenary 2021

ASKING THE QUESTION?

If we are to celebrate this 150th then my hope is that we will recognise the past and do things that help build the future. Trees? This year is 100 years since Harry Butler took off from Unley Oval in front of a crowd of 20,000 and flew across the sea to Minlaton !

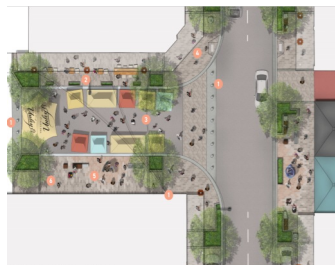


Unley Oval 1919

Milan increasing tree cover by 30% lowering summer heat by 2°C

Cntrl/Click and see <https://www.facebook.com/sbsnews/videos/1982025428767945/>

We must require all new developments to have tree cover (15%?) including our high rise if we want to maintain our 3°C benefit we gain with 30% cover. At least we are planting over 100 new trees on **King William Road**.



Wanting to keep up to date on KWR click on link

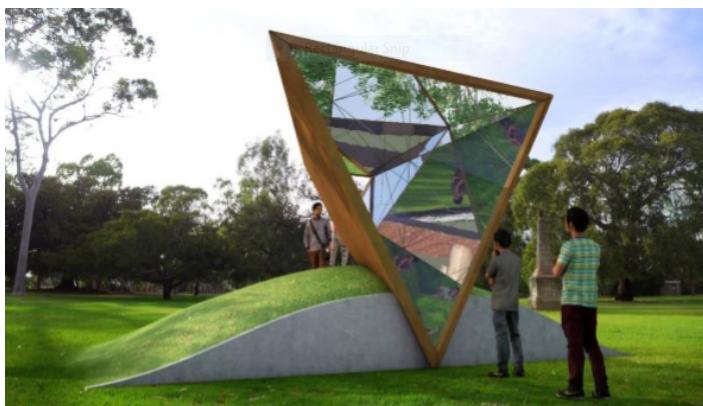
Major Art Work

What is Echo? What do you think?

Echo is a permanent public art project for the City of Unley in Heywood Park by artist Jason Sims

Echo is a large-scale geometric sculpture (approximately 4m high x 4.5m wide x 3m deep) that will use the properties of light and reflection to create a simple illusion of space and form.

Echo is the principal project in Year 5 of the City of Unley's Involve Unley: Public Arts Strategy.



Michael's Summer News 2019

Rate Target 2020
Future Entrepreneurs
Public Art
Safe to Walk & Cycle
Community Grants
Black Forest Pr. 100yr
Milan 2°C cooler
Cooler Greener report

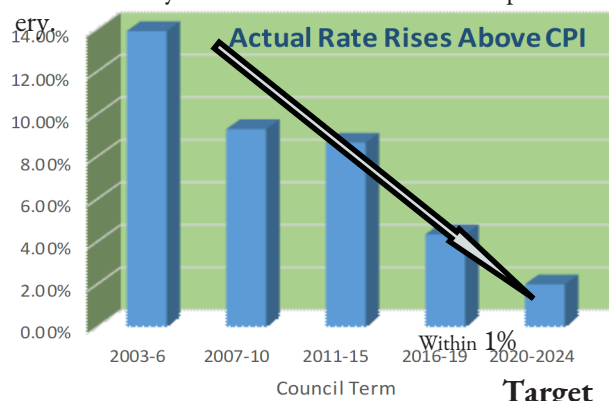


Mayor Michael Hewitson AM
mhewitson@unley.sa.gov.au

Rate Target 2020

New Council votes 11 / 1 to cap rates

With a new Council made up of a majority of new members, all of the directions set by the last Council could change. The CEO had in his KPI's (key performance indicators set by the previous council) to plan for the 2019-20 Council budget to be based on CPI. Deputy Mayor Peter Hughes moved a motion to ensure this target was one the new council sought to achieve. The rate to be within 1% of CPI means money is limited and not all great projects can be funded. Unlimited money leads to unlimited waste and poor delivery.



RATES within 1% CPI | GOOD SERVICES
NEW IDEAS | SOUND MANAGEMENT

PUBLIC ART

Around Goodwood Oval some bees have landed.

Beauty is in the eye of the beholder. I love these playground like accessories. I believe they add to the joy of life. Your thoughts?



SAFER WALKING AND CYCLING.

Goodwood and Unley Park are connecting

with a safe path along Weller St to Albert Street. This along with a cycle and gopher refuge on King William Road, will give a safer cross city pathway to connect to the beautiful Charles Walk and Windsor Street paths. With black spot funding after injuries, two roundabouts will be made cycle safe. Planning has begun to separate cyclists from pedestrians on the Glenelg Adelaide bikeway on King William Road. Many other projects and progress are on the list attached.

Pictured is a footpath in Everard Park. I asked the resident to email me to ask for it to be fixed. This is not a safe footpath. As owners of Unley we are in this together.

I hope our future trees are planned better than this!



A GREENER, SHADIER UNLEY

At the March Council meeting our staff are presenting a proposal that they believe will deliver our 2045 target.

Workshop briefings have underlined the fact that unless we reverse the loss of the 36% of all our trees on private land, our tree canopy will continue to fall. On hot days Unley will be even hotter. Those on my tree email group will receive this report ASAP.

100 Years Black Forest Primary

“Then Black Forest was so heavily treed that you could not see the sky!” Hence “Black Forest”

The pride of the students and staff was on display, period dress, great singing and an attentive and magnificently presented student body. The students of 1919 would be proud. Along with Cr Palmer, I was delighted to be part of this celebration and plant with the help of students two new trees. Congratulations to the new leadership, staff, students and parents.



They are two small trees that in 100 years will matter. The Mayoral chains were designed 125 years ago

COMMUNITY GRANTS

Applications close March 29th.

The purpose of the program is to encourage and support community projects that provide a service or program to residents of the City by fostering opportunities for individuals, community groups and organisations to access and participate in a wide range of activities and projects. Grant funding of up to \$4,000 is available. Funding is offered twice a year and the next round is September.

Future Entrepreneurs

Applications close 18 March 2019.

Fish Tank 2019 is a proven Unley program designed to engage, support, celebrate and

invest in the young people of Unley. Young people aged 12-25 who live, work, study or play in the City of Unley will be invited to participate, with the opportunity to ‘pitch’ their business ideas to a panel of industry judges.

APPLICATIONS NOW OPEN

— for the opportunity to pitch your business idea to the Fish Tank. You could win a prize package that will help grow your business! Click on the link



Mayor Michael Hewitson AM

0439752867 Visit my blog Ctrl/Clk

michaelhewitson.blog